

COMPACT BODY STRUCTURE,
HIGH PERFORMANCE



ONE BRAND, COMPLETE SOLUTIONS
IN PNEUMATIC AUTOMATION

PMR Series
Ø16-Ø40
Rodless Cylinder

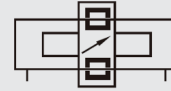


-  RUNNING OIL FREE
- 304**
AISI 304 TUBE
-  ANODIZED COATED COVER



PMR SERIES

Ø16-Ø40
Rodless Cylinder



- CARRIAGE MOVES LINEARLY ON TUBE BY THE HELP OF MAGNETICALLY COUPLING STRUCTURE
THIS MOVEMENT IS ENABLED BY MAGNETIC RINGS INSIDE THE CARRIAGE AND TUBE
- DUST-PROOF ISOLATION BETWEEN MOVING CARRIAGE AND TUBE DESIGN
- COMPACT BODY STRUCTURE
- RUBBER BUMPERS AND ADJUSTABLE CUSHIONING ENSURES SMOOTH OPERATING

SAMPLE CODING: PMR-0025-0500

P	MR	0025	0500
SERIES	PRODUCT TYPE	DIAMETER	STROKE
PMR	MR	16	50 - 1000 (Max. Stroke)
		20	50 - 2000 (Max. Stroke)
		25	50 - 2000 (Max. Stroke)
		32	50 - 2000 (Max. Stroke)

TECHNICAL INFORMATION

PRODUCT MODEL

	PMR-0000-0000				
	16	20	25	32	40
Diameter	16	20	25	32	40
Action Type	Double Acting				
Working Fluid	Filtered Air (40 µm)				
Operating Pressure (bar)	1.5 -7				
Maximum Pressure (bar)	10.5				
Operating Temperature (°C)	-10...-60°C				
Speed Range	50 - 400mm/s				
Cushioning Type	Adjustable Cushioning + Rubber Bumpers				
Stroke Tolerance	0 -250: +1.0 251 -1000: +1.4 1001 -1500				
Port Size	M5 X 0.8		1/8"		1/4"
Theoretical Holding Force	195	290	390	710	1090

- An appropriate cylinder diameter must be selected according to operating load.
- Before connecting, make sure that fasteners and ports are clean and avoid any particle entering inside the cylinder.
- Working fluid must be (40 µm) filtered air.
- Precautions must be taken to avoid any frozen liquid inside cylinder under low temperatures.
- Please check cushionings on first test operation to avoid any damages before connecting loads.
- Lateral loads must be avoided to maximize cylinder service life.
- If cylinder won't be running for a while, please blind air ports and keep the cylinder under clean conditions.

OPERATING CONDITIONS

Working fluid:

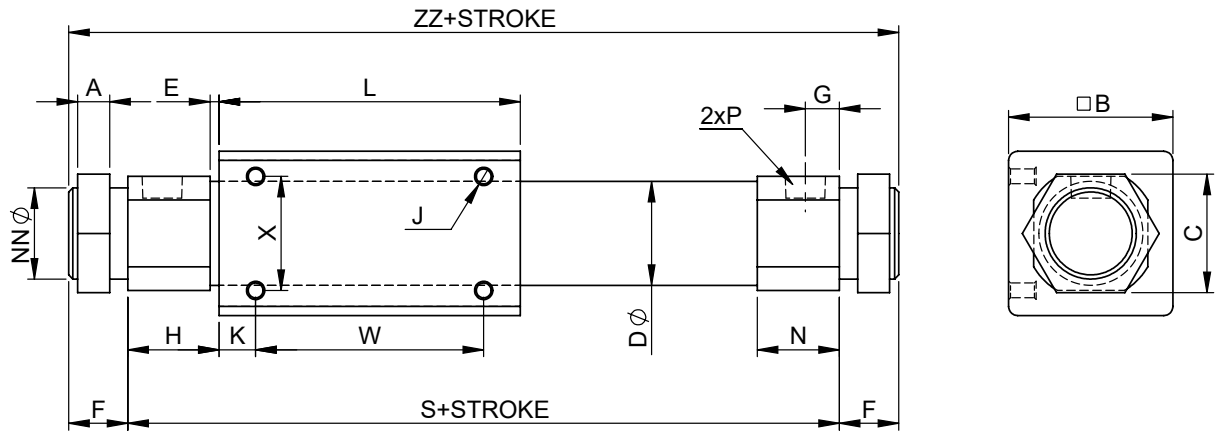
Filtered and lubricated or filtered and non-lubricated air

Operating Temperature Range

Polyurethane (PU): (-20°C) - (+80°C) / Viton (FKM): (-30°C) - (+150°C)

Maximum Operating Pressure

10 Bar



Cylinder Ø mm	A	B	C	D	E	F	G	H	J	K	L	N	NN	S	W	X	ZZ	P
16	4	35	14	18	2	10	5,5	13	5	11	57	11	M10x1	83	35	19	103	M5x0,8
20	7	35	26	22,8	2	13	7,5	20	6	8	66	18	M20x1,5	106	50	25	132	1/8"
25	8	46	32	27,8	2	13	7,5	20,5	7,5	10	70	18,5	M26x1,5	111	50	30	137	1/8"
32	8	60	32	35	2	16	8	22	8	15	80	20	M26x1,5	124	50	40	156	1/8"

PEMAKS NOW ON SOCIAL MEDIA

FOLLOW OUR SOCIAL MEDIA ACCOUNTS FOR
DEVELOPMENTS, NEW PRODUCTS AND SOLUTIONS.

